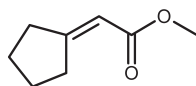


Floral

Fruity

CYCLOPIDENE

937160



Acetic acid, cyclopentylidene-,
methyl ester

REFERENCES

CAS number: **0040203-73-4**

FEMA number: –

REACH number: –

Stabilizer: **0.05% of BHT**Solvent: **None added**Firmenich code: **937160**

Tenacity

Lasts 2 days
on a smelling strip.



1 month

3 weeks

2 weeks

1 week

4 days

3 days

2 days

1 day

6 hours

3 hours

2 hours

1 hour

OLFACTIVE NOTE

A very powerful floral modifier related to ylang.

PERFUMERY USAGE

CYCLOPIDENE gives diffusion and lift. It combines the salicylate/cresyl harmony that exists in many white florals.

PHYSICO-CHEMICAL PROPERTIES

appearance	colourless liquid
flashpoint	69°C
vapour pressure	65.33 Pa at 20°C
purity	min 90%
log p (measured)	2.02
molecular weight	141

STABILITY & PERFORMANCE

RECOMMENDED APPLICATIONS	STABILITY	TYPICAL % USE	SUBSTANTIVITY & REMARKS	
fine fragrances	■■■■■	traces - 0.5%	Top and heart note	
shampoo	■■■■	traces - 0.5%	wet: ■■■■	dry: ■■■■
shower gel	■■■■	traces - 0.1%	bloom: ■■■■	
soap	■■■■	traces - 0.5%	foam: ■■■■	dry hand: ■■
detergent	■■■■	traces - 0.5%	wet: ■■■■	dry: ■
softener	■■■■■	traces - 0.5%	wet: ■■■■	dry: ■
APC	■■■■	traces - 0.5%	–	
candle	■■■■	traces - 0.5%	cold wax: ■■	burning: ■■